



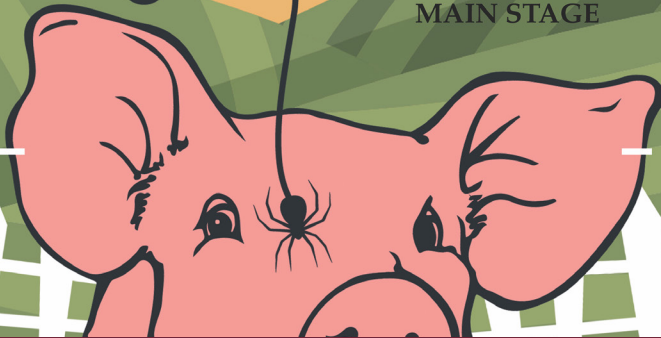
MISSISSIPPI STATE UNIVERSITY
Lyceum
SERIES

Charlotte's Web

Adapted by
Joseph Robinette

Based on the book by E.B. White

SEPTEMBER 27 AT 7 p.m.
MCCOMAS HALL
MAIN STAGE



MISSISSIPPI STATE
UNIVERSITY®

Charlotte's Web

Adapted by Joseph Robinette

Based on the book by E. B. White

Direction
Tonya Hays

Prop Design
Darron Kastner

Stage Management
Kensington Frasure

Puppet Design
Tim Baker

Technical Direction
Jesse Wade

Scenic Design
Sam Phyfer

Lighting Design
Greg Thorn

Costume Design
Mariama Hawkins

Sound Design
Ruby Wilkerson

Special Thanks to:

Julia Pratt and the Lyceum Series, Alpha Psi Omega - Eta Pi Chapter, Sarah Nicholas,
MSU Access program- Christine Williams, Jamey Bachman and Golden Triangle
Theatre

CAST

Wilbur.....	Jacob Uithoven
Charlotte, Mrs. Arable, Baby Spider	Allyson Cole
Fern, Goose, Spectator.....	Kate Jasper
Arable, Templeton, Lurvy.....	Charles Barlow
Homer, Sheep, Spectator 2, Avery.....	Aidan Levy
Narrator, Reporter.....	Kelsei Elmore
Gander, President of the Fair, Uncle Pig.....	Shamar Hunt

PRODUCTION STAFF AND CREW

Assistant Stage Management.....	Lillian Bingham
Assistant Costume Design.....	Mari Parker
Puppet Technicians.....	Kiki Efantis, Darron Kastner
Light Board Operator.....	Mari Parker
Sound Board Operator.....	Joshua Mounsey
Run Crew	Maggie Zheng and Evan Loy
Dresser/Run Crew.....	Albany Mercer and Sierra Robinson
Theatre MSU Intern	Haley Reeves

Charlotte's Web is produced by special arrangement with THE DRAMATIC PUBLISHING COMPANY of Woodstock, Illinois.

The videotaping or making of electronic or other audio and/or visual recordings of this production and distributing recordings or streams in any medium, including the internet, is strictly prohibited, a violation of the author's rights and actionable under the United States copyright law.



The Kennedy Center American Theatre Festival, part of the Rubenstein Arts Access Program, is generously funded by David M. Rubenstein.

Special thanks to The Harold and Mimi Steinberg Charitable Trust for supporting the John F. Kennedy Center for the Performing Arts' Kennedy Center American College Theatre Festival.

Additional support is provided by The Honorable Stuart Bernstein and Wilma E. Bernstein; and the Paula McNichols Foundation.

Kennedy Center education and related artistic programming is made possible through the generosity of the National Committee for the Performing Arts.

This production is entered in the Kennedy Center American College Theater Festival (KCACTF.) The aims of this national theater education program are to identify and promote quality in college-level theater production. To this end, each production entered is eligible for a response by a regional KCACTF representative, and selected students and faculty are invited to participate in KCACTF programs involving scholarships, internships, grants, and awards for actors, directors, dramaturgs, playwrights, designers, stage managers and critics at both the regional and national levels.

Productions entered on the Participating level are eligible for invitations to the KCACTF regional festival and may also be considered for national awards recognizing outstanding achievement in production, design, direction and performance.

Last year, more than 1,500 productions were entered in the KCACTF involving more than 200,000 students nationwide. By entering this production, our theatre program is sharing in the KCACTF goals to recognize, reward and celebrate the exemplary work produced in college and university theaters across the nation.